

CIBL



CENTER for
INQUIRY-BASED
LEARNING

2018-19 ANNUAL REPORT



A WORD FROM THE EXECUTIVE DIRECTOR

Friends,

For nearly 20 years, the Center for Inquiry-Based Learning (CIBL) has been providing schools all across North Carolina with high-quality, hands-on curriculum materials and teacher professional development. The 2018-19 school year saw new collaborations and new initiatives with some of our existing school district partners.



Last year, we partnered with Guilford County Schools (GCS) on an elementary school pilot program. Every 5th grade teacher in GCS received professional development and a Weather Systems module from CIBL. We loved hearing from teachers that the CIBL materials challenged student misconceptions and facilitated fun learning in the classroom. That's why we do what we do here at CIBL!

Additionally, we worked with Durham Public Schools to provide materials packs to every K-5 classroom in the district. Through that initiative, we were able to take one of CIBL's greatest strengths – our ability to manage materials in an efficient, cost-effective way – and transform it into a big impact for our hometown partner. It's so rewarding to develop new projects to support teachers and students in this way.

Looking ahead, CIBL is working on a new model for teacher leadership that will allow science teachers to gain leadership experience while remaining in the classroom. As one teacher said, "I would like to help new science teachers become confident teaching using an inquiry-based approach. There is always so much excitement with students when lab materials are out!" We are excited about the potential for this project and will pilot this idea with a small cohort of teachers in the 2019-20 school year.

Our work at CIBL would not be possible without support from teachers, curriculum facilitators, and administrators. Their commitment to providing materials-rich environments for their students encourages us to improve our curriculum in ways that are meaningful, convenient and, most of all, fun. We would like to extend a special thank you to our funders. Their support, both financial and in-kind, helps make these experiences possible in North Carolina classrooms.

Todd Guentensberger, Executive Director, CIBL

A handwritten signature in black ink that reads "Todd E. Guentensberger". The signature is written in a cursive style.

Expanding Our Impact

The STEM education landscape is changing all the time and at CIBL we are committed to working with our partners to develop programs that meet their needs. Here are a few ways that CIBL has expanded its impact beyond our traditional kit-based model.

NC Science Festival

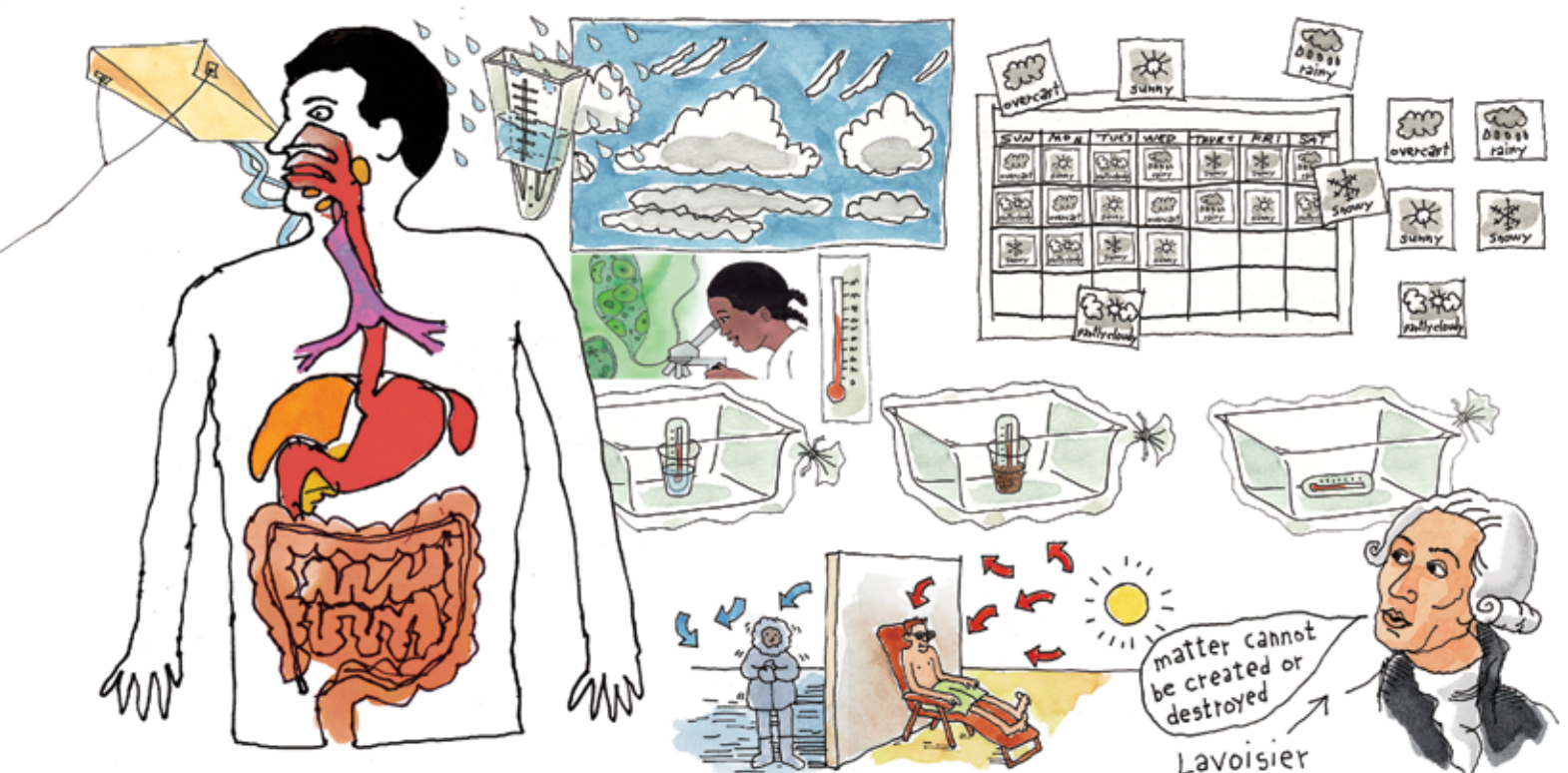
For the 3rd year in a row, CIBL has fulfilled the materials management component of the NC Science Festival Science Night project. In 2018-19, the project expanded to serve 170 schools, reaching nearly 35,000 people! The NC Science Festival team praised CIBL for our "100% accurate and on-time delivery with zero defects or complaints."

Weather Systems Module

Guilford County Schools expressed a need for more resources to support the 5th grade Weather standards. To meet this need, CIBL developed a package outside our typical kit-based model. The 5th Grade Weather Systems module is available as a stand-alone unit with optional refurbishment packs for multiple uses. This project allowed us to serve approximately 150 classrooms and 4,500 students!

Classroom Materials Management

Durham Public Schools supplies materials packs to each K-5 classroom. This year, CIBL sourced, received and assembled all the materials to make each pack. One of CIBL's greatest assets is our materials management staff. Their hard work and ability to adapt to a new model allowed us to serve approximately 815 classrooms and 15,000 students!



CHARITABLE SUPPORT

Bayer USA Foundation
 Biogen Foundation
 Duke Energy Foundation
 Mary Duke Biddle Foundation
 CIBL Board and Staff



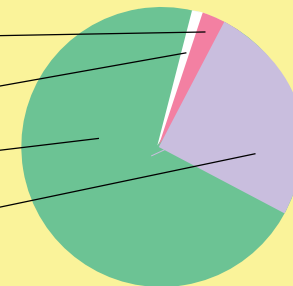
PARTNERS

Morehead Planetarium & Science Center -
 NC Science Festival
 The Science House at NC State University

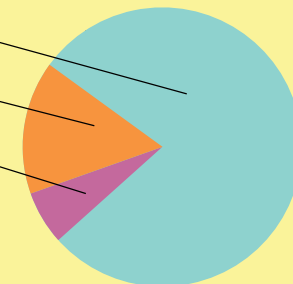


FINANCIAL REPORT (FISCAL YEAR ENDING 8/31/2018)

REVENUE	2018	% of total revenue/expenses
Corporate/Foundation grants	\$24,426	3.2%
Individual contributions	1,886	0.2%
Program service revenue	559,650	71.1%
Investment income	200,592	25.5%
Total revenue	786,554	



EXPENSES	2018	% of total revenue/expenses
Program service expenses	473,138	78.3%
Management & general expenses	93,277	15.4%
Fundraising expenses	38,336	6.3%
Total expenses	604,751	



NET INCOME \$181,803

NUMBER OF STUDENTS SERVED IN 2018-19

K-5: 31,215 6-8: 4,375

NUMBER OF KITS SHIPPED IN 2018-19

K-5: 618 6-8: 515

TEACHER TESTIMONIALS

"I believe in these kits and what they do for my students!"

"With the help of CIBL my philosophy of teaching has completely changed."

"Their success on EOG tests is a result of using more CIBL kits."

"Students love to gather and analyze their own data. Through CIBL materials, they're more interested in what it has to say."

"These labs are the reasons why students fall in love with science."

"Since CIBL lessons are discovery-based and not text-based, both ESL and EC students are able to be active participants."



STUDENT TESTIMONIALS

"I got to do it instead of watching a video."

"I would rather work and interact with my classmates instead of working in a book."

"Lots of people got together and worked as a team."

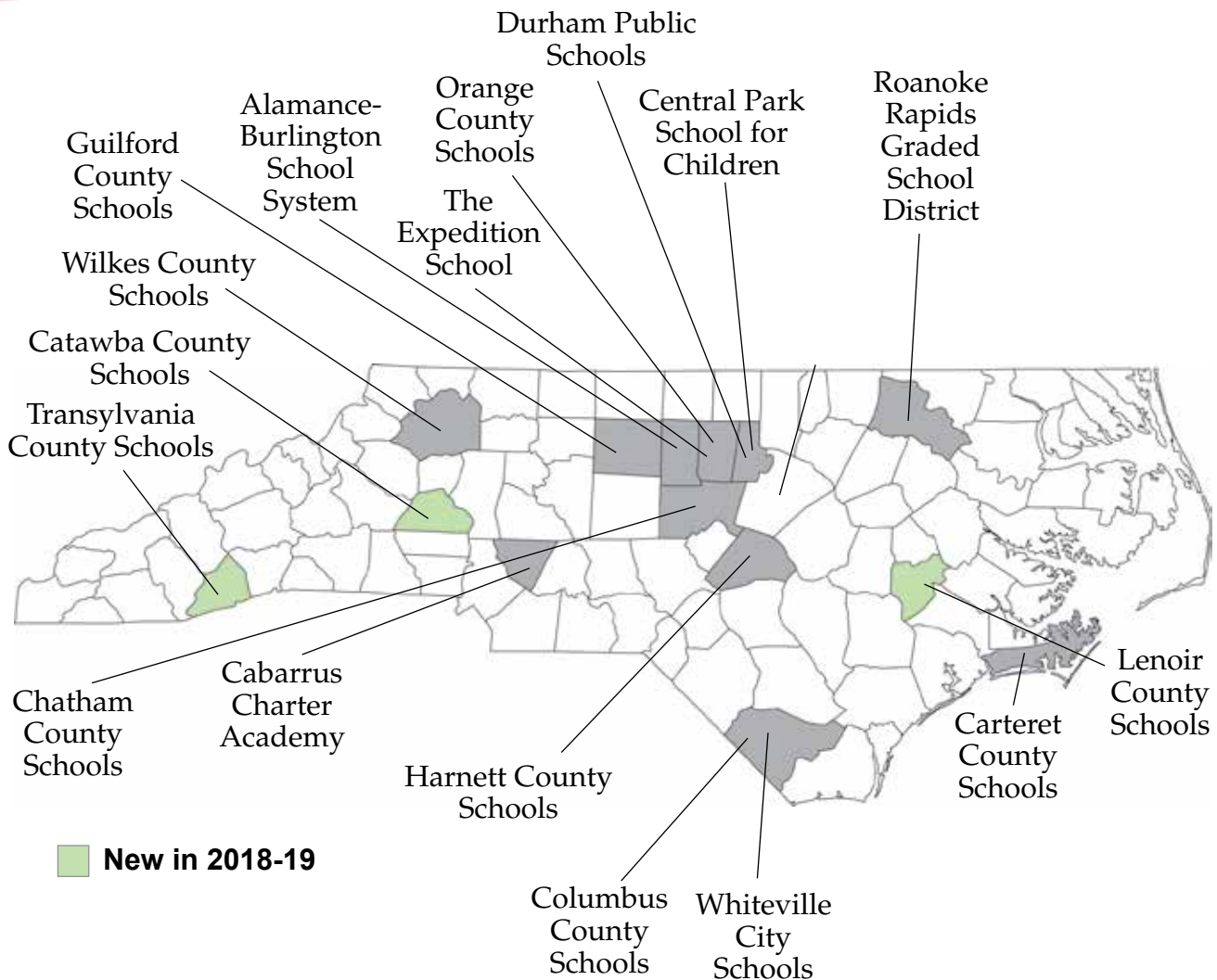
"I think why I love science so much is because of the labs."

"The hands-on activities really helped me on the end-of-unit test."

"We got to touch the rocks and feel the different textures and weight of the rocks."



DISTRICTS AND SCHOOLS WE WORKED WITH 2018-19 SCHOOL YEAR



CIBL'S MISSION

To support North Carolina K-8 teachers with training and the most engaging, integrated, hands-on STEM curriculum materials that promote creativity, collaboration and communication.

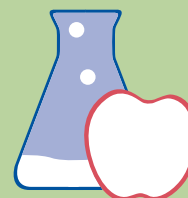
CIBL'S VISION

To nurture the natural excitement children have doing science.

CIBL BOARD OF DIRECTORS

Carole Stern	John Parker
Lee Ann Segalla	Richard Simmons
Mack McCary	Dave Smith
Ben Owens	Don Wells
Jason Painter	Korah Wiley

CIBL



CENTER for
INQUIRY-BASED
LEARNING

919.294.9881

todd@ciblearning.org
mara@ciblearning.org