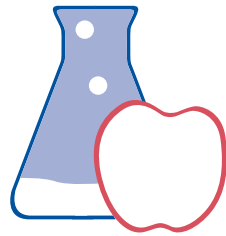


CiBL



**CENTER for
INQUIRY-BASED
LEARNING**

2016-17 ANNUAL REPORT



A WORD FROM THE EXECUTIVE DIRECTOR

Friends,

For over 15 years, the Center for Inquiry-Based Learning (CIBL) has been providing schools all across North Carolina with high-quality, hands-on curriculum materials and teacher professional development. The 2016-17 school year saw new collaborations, new school district partners, and new curriculum. It has been exciting to forge partnerships with other nonprofits to expand access to hands-on STEM curriculum across the state.



One of our new school district partners is Duplin County Schools. Thanks to the generosity of the William R. Kenan, Jr. Charitable Trust, every middle school teacher in Duplin County Schools received professional development and a hands-on STEM kit from CIBL. One teacher remarked, “It was the best workshop I’ve been to in my 20 years of teaching! I had so much fun that I almost felt guilty about not being at school.” We look forward to expanding the project in 2017-18 and to having even more experiences like this!

In January, we celebrated another partnership. The Duke Energy Foundation provided support to expand our middle school program with Columbus County Schools and Whiteville City Schools. At our professional development session in Whiteville, a Duke Energy Foundation representative joined us for a check presentation. The smiles and excitement from the teachers and school administrators demonstrated the impact that these resources have, especially in high-need areas.

CIBL remains committed to developing curriculum to meet North Carolina teachers’ needs. This year, we developed two new units: 6th grade Solar System and 7th grade Machines, Energy, Forces & Motion. There will be even more updates to our middle school curriculum for the 2017-18 school year.

Our work at CIBL would not be possible without support from teachers, curriculum facilitators, and administrators. Their commitment to providing materials-rich environments for their students encourages us to improve our curriculum in ways that are meaningful, convenient and, most of all, fun. We would like to extend a special thank you our funders. Their support, both financial and in-kind, helps make these experiences possible in North Carolina classrooms.

Todd Guentensberger, Executive Director, CIBL

A handwritten signature in black ink that reads "Todd E. Guentensberger". The signature is written in a cursive style with a large, sweeping 'T' and 'G'.



Duke Energy Foundation Supports Hands-On STEM in Columbus County

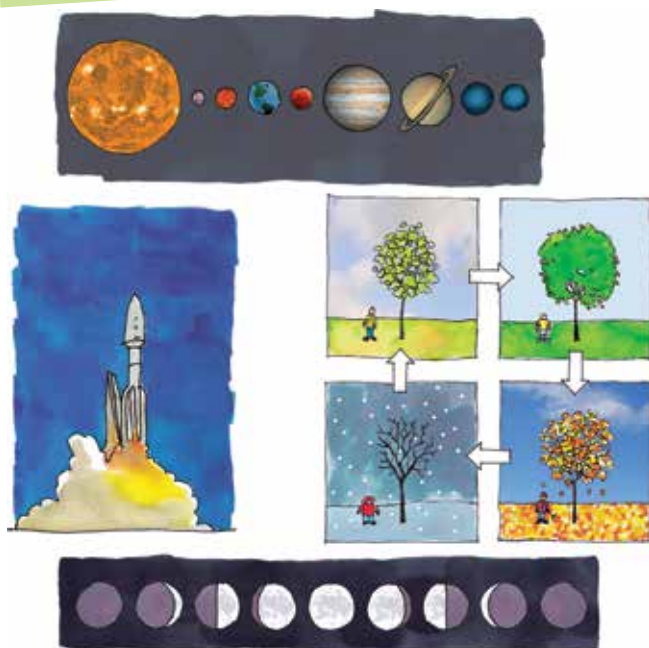
Middle school students in Columbus County and Whiteville City Schools had fun learning about heat transfer, electromagnetic waves, and electrical currents this school year, thanks to a \$18,076 grant from Duke Energy Foundation to expand access to hands-on science curricula. The grant provided every 6th and 7th grade teacher in Columbus County Schools and Whiteville City Schools with professional development and a hands-on kit from CIBL.

New Curriculum

CIBL is committed to serving North Carolina teachers with hands-on curricula that meet the North Carolina Essential Standards. This year, we debuted two new units:

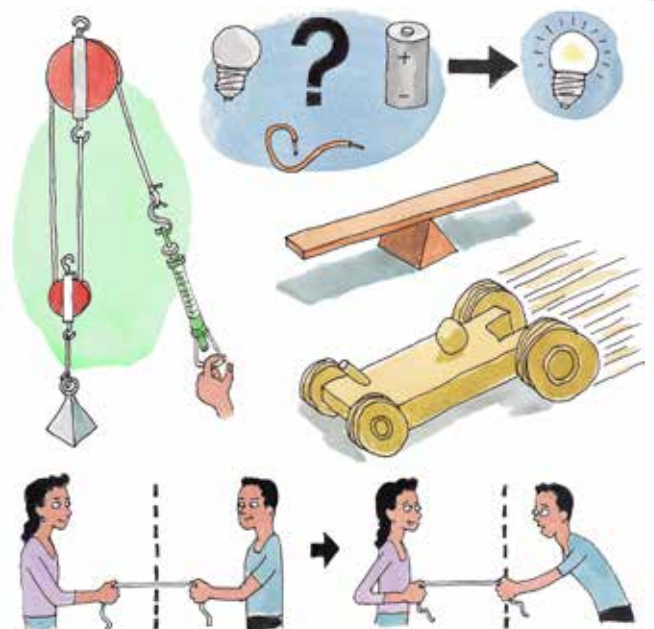
Solar System – 6th Grade Earth Science

Concepts include phases of the moon, seasons, eclipses, space exploration, and the ability of Earth to sustain life



Machines, Energy, Forces & Motion – 7th Grade Physical Science

Concepts include potential and kinetic energy, simple machines, electrical currents, friction, gravity and magnets.





CHARITABLE SUPPORT

The Biogen Corporation
 The Duke Energy Foundation
 The William R. Kenan, Jr. Charitable Trust
 CIBL Board and Staff



PARTNERS

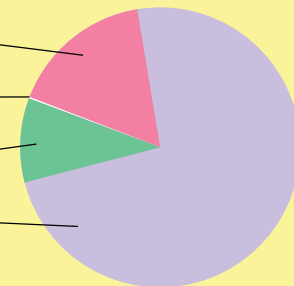
Morehead Planetarium & Science Center
 - NC Science Festival
 Museum of Natural Sciences
 The Science House



FINANCIAL REPORT (FISCAL YEAR ENDING 2016-17)

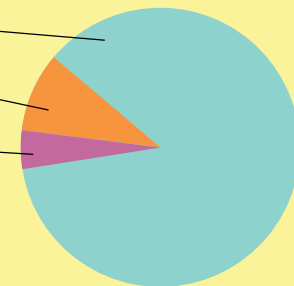
REVENUE

	2016	% of total revenue/expenses
Corporate/Foundation grants	\$124,233	16.5%
Individual contributions	800	0.1%
Investment income	72,862	9.7%
Program service revenue	554,640	73.7%
Total revenue	752,535	



EXPENSES

Program service expenses	514,360	86.4%
Management & general expenses	54,369	9.2%
Fundraising expenses	26,417	4.4%
Total expenses	595,146	



NET INCOME \$157,389

NUMBER OF STUDENTS SERVED IN 2016-17

K-5: 29,370 6-8: 61,000

NUMBER OF KITS SHIPPED IN 2016-17

K-5: 979 6-8: 488

TEACHER TESTIMONIALS

"The resources made hands on learning more accessible and fun."

"Students thoroughly enjoy being able to use the tools that real scientist would use to make connections with what they are learning."

"I hope to use these kits for the rest of my career."

"I had so much fun at the training! This reminds me why students love labs so much."

"With STEM jobs being the future jobs of our students these materials are crucial in fostering a love of science in minority students"

"Each time the kits showed up my students started asking what labs are we going to do and they talked about how much they love the activities."



STUDENT TESTIMONIALS

"Labs help you connect to science. It helps us communicate."

"I liked the experiments because visualizing what we learn helps me a lot."

"It was really engaging and it actually helped me stay focused and helped me understand."

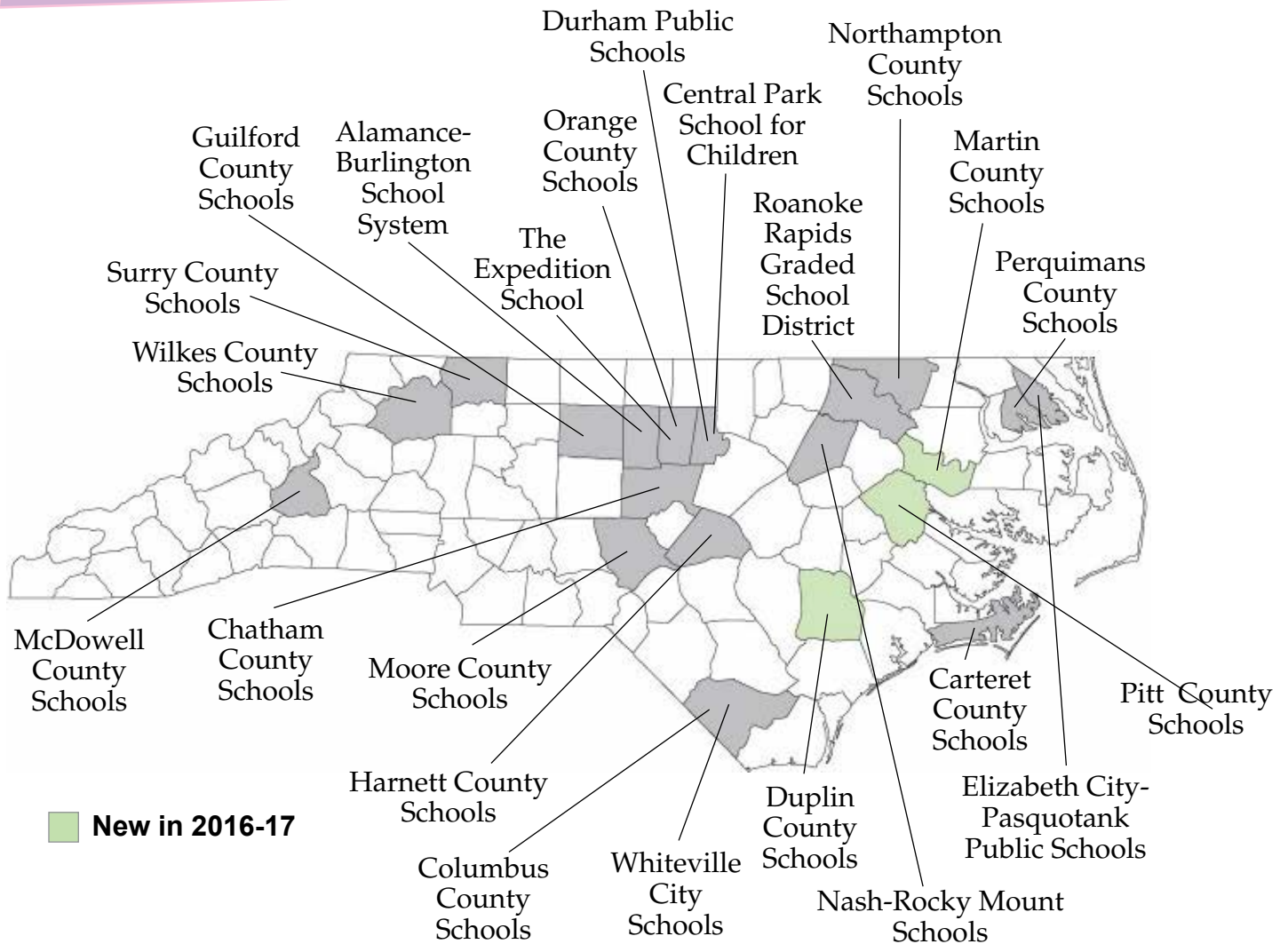
"I liked when we finally got a chance to do it ourselves. It helped us learn more than just reading out of our books."

"I liked how it was hands-on and everybody got to be a part of it."

"I got to wear goggles and use my hands. I felt like a scientist. I loved it."



DISTRICTS AND SCHOOLS WE WORKED WITH 2016-17 SCHOOL YEAR



CIBL'S MISSION

To support North Carolina K-8 teachers with training and the most engaging, integrated, hands-on STEM curriculum materials that promote creativity, collaboration and communication.

CIBL'S VISION

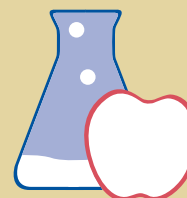
To nurture the natural excitement children have doing science.

CIBL BOARD OF DIRECTORS

Carole Stern
LeeAnn Segalla
Don Wells
Mack McCary

John Parker
Joan Barber
Korah Wiley

CIBL



**CENTER for
INQUIRY-BASED
LEARNING**

919.294.9881

todd@ciblearning.org
mara@ciblearning.org